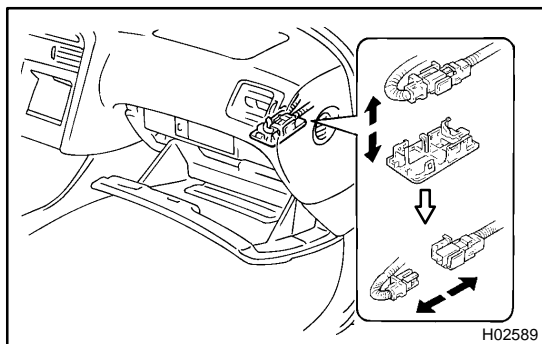


## REMOVAL

### NOTICE:

- If the wiring connector of the SRS is disconnected and the ignition switch is in ON or ACC position, DTCs will be recorded.
- Never use airbag parts from another vehicle. When replacing parts, replace with new parts.



### 1. DISCONNECT AIRBAG CONNECTOR

- (a) Using a screwdriver, remove the glove compartment door finish plate.

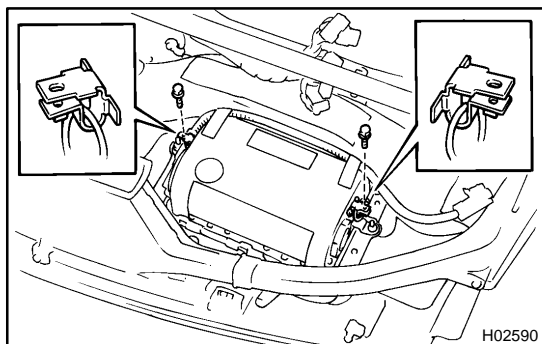
#### HINT:

Tape the screwdriver tip before use.

- (b) Remove the airbag connector from the plate.  
(c) Disconnect the airbag connector.

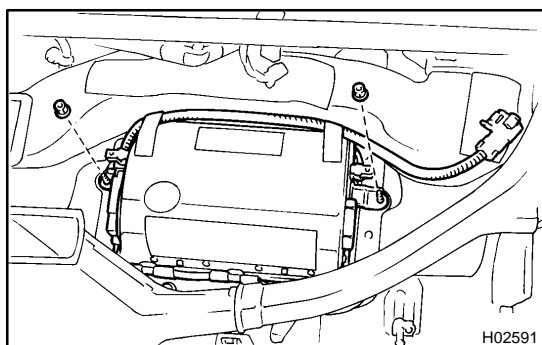
### 2. REMOVE INSTRUMENT PANEL

(See page [BO-91](#))



### 3. REMOVE FRONT PASSENGER AIRBAG ASSEMBLY

- (a) Remove the 2 bolts and 2 straps.



- (b) Remove the 2 nuts and front passenger airbag assembly.

#### CAUTION:

- Do not store the front passenger airbag assembly with the airbag deployment side facing down.
- Never disassemble the front passenger airbag assembly.